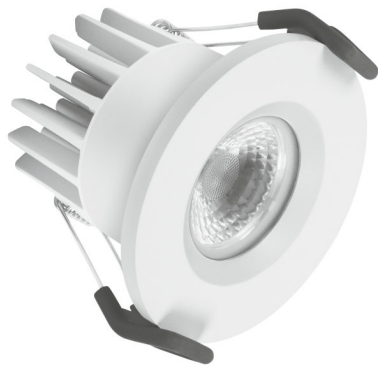


# PRODUCT DATASHEET

## SPOT FP FIX 7 W 3000 K IP65/IP20 WT

**SPOT FIREPROOF | Recessed mounted spotlight, round shape, fire-resistant**



---

### AREAS OF APPLICATION

- Replacement of halogen lamp spotlights
- Hotel rooms
- Bars, restaurants
- Bathrooms
- Accent lighting
- Galleries, museums
- General illumination
- Outdoor

---

### PRODUCT BENEFITS

- High luminous efficacy
- Design matches the LEDVANCE DOWNLIGHT luminaire family
- Energy savings of up to 90 % compared to halogen lamp spotlights
- Functional and minimalistic design
- Easy installation with fast connection
- External driver for extended flexibility (compatible with selected dim. drivers)
- Designed for extra IP protection

---

### PRODUCT FEATURES

- Fire-resistant (up to 90 minutes, tested in accordance with EN 1365-2:2014 'fire resistance tests for loadbearing elements - Part 2: Floors and roofs')
- Outdoor use and fire-resistant (up to 90 minutes, BS476-20:1987 and BS476-21:1987)
- Compatible with standard ceiling cutouts of 68 mm
- Initial color consistency:  $\leq 4$  SDCM



- Type of protection, front side: IP65

**TECHNICAL DATA**

Electrical data

Nominal wattage	7.00 W
Operating mode	Electronic control gear (ECG)
Nominal voltage	220...240 V
Power factor $\lambda$	>0.90
Mains frequency	50/60 Hz
Max. no. of lum. on circuit break. B16 A	32
Max. no. of lum. on circuit break. C10 A	25
Max. no. of lum. on circuit break. C16 A	40
Total harmonic distortion	< 15 %

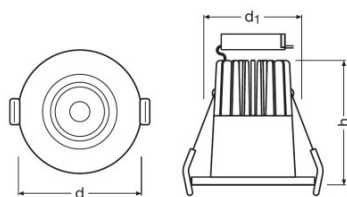
Photometrical data

Color temperature	3000 K
Luminous flux	530 lm
Luminous efficacy	75 lm/W
Standard deviation of color matching	$\leq 4$ sdc <sub>m</sub>
Light color (designation)	Warm White
Color rendering index Ra	>80

Light technical data

Beam angle	38 °
------------	------

Dimensions & weight



Diameter	90.0 mm
Height	72.0 mm
Product weight	289.00 g
Mounting diameter	68 mm

## Colors &amp; materials

<b>Body material</b>	Aluminum
<b>Product color</b>	White
<b>Housing color</b>	White
<b>Light emitting surface material</b>	PMMA

## Temperatures &amp; operating conditions

<b>Ambient temperature range</b>	-20...+45 °C
----------------------------------	--------------

## Lifespan

<b>Number of switching cycles</b>	100000
<b>Lifespan L70/B50 at 25 °C</b>	50000 h
<b>Lifespan L80/B10 at 25 °C</b>	40000 h
<b>Lifespan L90/B10 at 25 °C</b>	20000 h

## Additional product data

<b>Mounting type</b>	Recessed
<b>Mounting location</b>	Ceiling

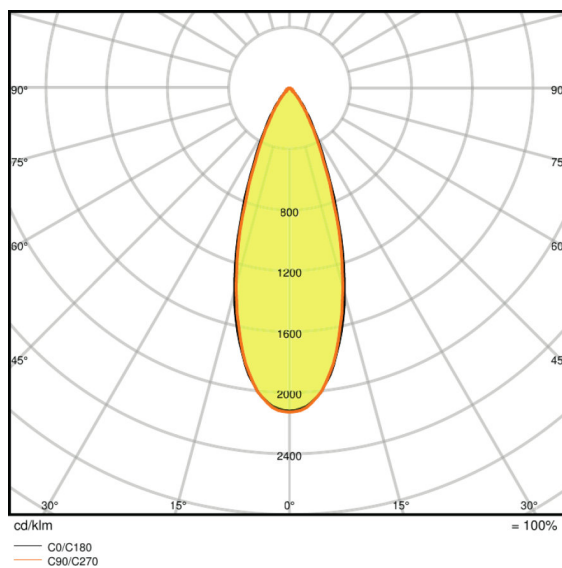
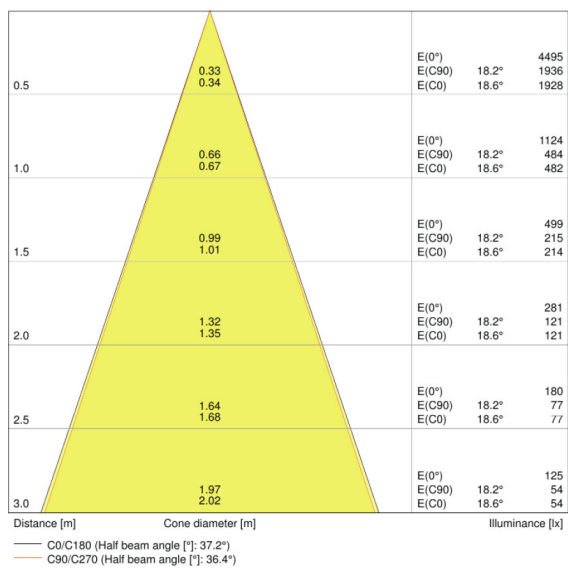
## Capabilities

<b>Dimmable</b>	No
<b>Type of connection</b>	Screw terminal, 2-Pole (L,N)
<b>LED module replaceable</b>	Not replaceable

## Certificates &amp; standards

<b>Protection class IK (shock resistance)</b>	IK06
<b>Glow Wire Test according to IEC 60695-2-12</b>	650 °C
<b>Photobio. safety group acc. to EN62471</b>	RG 0
<b>Protection class</b>	II
<b>Type of protection</b>	IP65/IP20
<b>Standards</b>	CE/CB/TÜV SÜD/EAC/RoHS

Light Distribution



LDC typ cone

LDC typ polar

SAFETY ADVICE

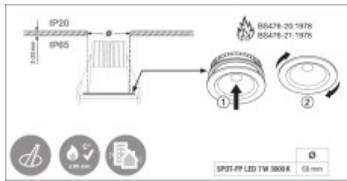
- Coordination with your responsible fire safety inspector is required in advance

LOGISTICAL DATA

Product code	Packaging unit (Pieces/Unit)	Dimensions (length x width x height)	Gross weight	Volume
4058075000209	Folding carton box 1	190 mm x 100 mm x 110 mm	398.00 g	2.09 dm <sup>3</sup>
4058075000216	Shipping carton box 20	525 mm x 400 mm x 250 mm	8289.00 g	52.50 dm <sup>3</sup>
4058075127333	Folding carton box 1	190 mm x 100 mm x 110 mm	398.00 g	2.09 dm <sup>3</sup>
4058075127340	Shipping carton box 20	525 mm x 400 mm x 250 mm	8720.00 g	52.50 dm <sup>3</sup>
4058075190627	Folding carton box 1	190 mm x 100 mm x 110 mm	398.00 g	2.09 dm <sup>3</sup>
4058075190634	Shipping carton box 20	525 mm x 400 mm x 250 mm	8720.00 g	52.50 dm <sup>3</sup>

The mentioned product code describes the smallest quantity unit which can be ordered. One shipping unit can contain one or more single products. When placing an order, for the quantity please enter single or multiples of a shipping unit.

ADDITIONAL CATALOG INFORMATION



---

## REFERENCES / LINKS

For Guarantee see

▶ [www.ledvance.com/guarantee](http://www.ledvance.com/guarantee)

---

## DISCLAIMER

Subject to change without notice. Errors and omission excepted. Always make sure to use the most recent release.